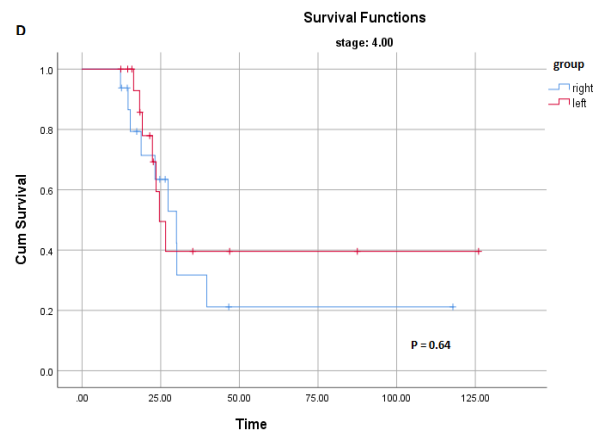
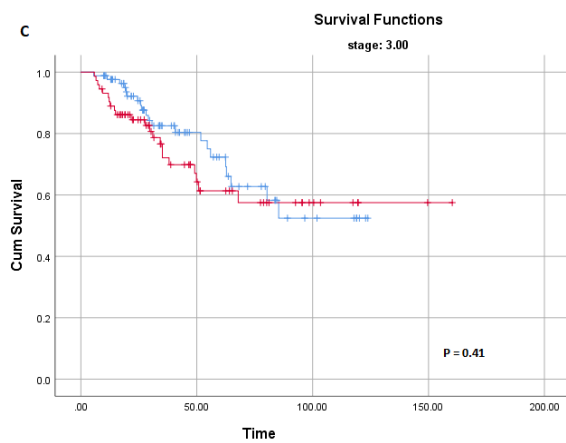
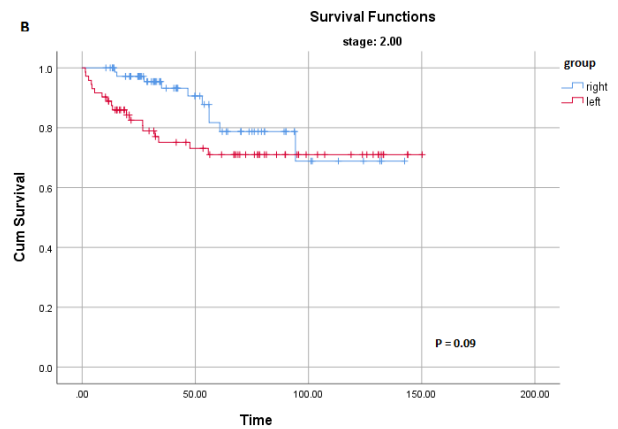
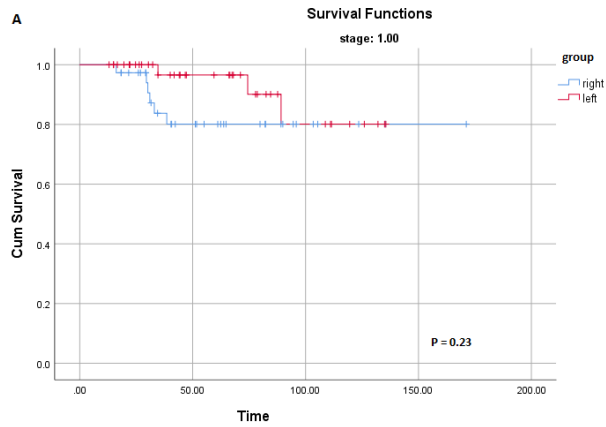


Appendix 1: Subgroup analysis between stage of colon cancer in right-sided and left-sided colon with lymphatic, perinural, and vascular invasions

	Type of colon cancer	Lymphatic invasion (n = 118)		Perinural invasion (n = 70)		Vascular invasion (n = 100)	
		N	P-value *	N	P-value *	N	P-value *
Stage (I), N	LCC	6 (5.08)	0.87	2 (2.86)	0.82	5 (5.00)	0.53
	RCC	7 (5.93)		3 (4.28)		7 (7.00)	
Stage (II), N	LCC	10 (8.47)	0.46	6 (8.57)	0.49	8 (8.00)	0.27
	RCC	13 (11.02)		8 (11.43)		13 (13.00)	
Stage (III), N	LCC	31 (26.27)	0.23	14 (20.00)	0.14	20 (20.00)	0.01
	RCC	43 (36.44)		24 (34.28)		39 (39.00)	
Stage (IV), N	LCC	6 (5.08)	0.15	8 (11.43)	0.33	5 (5.00)	0.41
	RCC	2 (1.69)		5 (7.14)		3 (3.00)	

* Result of chi-square test.



Appendix 2: A is an overall survival of stage I colon cancer in both right-sided and left-sided colon cancer. B is an overall survival of stage II colon cancer in both groups. C is an overall survival of stage III colon cancer in both groups. D is an overall survival of stage IV colon cancer in both groups.